



SHAKEEL
carpentry
creating a perfect finish



**COMPANY
PROFILE**



SHAKEEL
carpentry
creating a perfect finish

INDEX

1. Introduction & Company Profile
2. Products & Services
3. Organization Chart
4. Staff and Workers
5. Ongoing Projects
6. Completed Projects
7. Vision & Mission
8. Quality Policy
9. HSE Policy
10. Trade Licence
11. Pictures from Completed Works



INDEX

For Anything made of Wood

Finest Joinery for Homes, Villas, Offices, Building, Hotels & Interiors
Doors, Kitchen Cabinets, Wardrobes, Pergola, Office Cabinets

SHAKEEL CARPENTRY WORKS LLC

Ph: 052 680 2343 | Al Jurf1 Ind. Area Ajman

Email: info@joinery.ae | Web: www.joinery.com



INTRODUCTION & COMPANY PROFILE

Shakeel Carpentry Works LLC carries wide expertise in joinery and wooden decoration works for interior as well as for exteriors, including but not limited to flooring of all kinds, wall cladding, joinery (doors, wardrobes, kitchen & office cabinets, desks, workstations, pergola, cladding & decor), for residential and commercial buildings, backed by the experience of its founders and appointed staff and technicians. With a JV (joint venture) agreement for joinery works with Lamasat Trading LLC and assisted by sister company for aluminium & glass works, Al Burraq Aluminium Works (www.alumin.ae), both based in Ajman, we are able to cater to most of the needs of Interior works. Our projects are spread all over Dubai & Sharjah, as can be seen from the projects list and pictures provided in following pages. Many reputed clients can vouch for the dedication of our team, and are willing to offer us more projects.

The SCW team is committed to respect client's requirements as the foundation of their work culture, so that the team can ensure that the deliverables they produce not just meet client's expectations but exceed them.

We present before you a team of qualified proficient engineers, quality champions of materials as well as of construction, who have already made a mark in the UAE construction industry through their dedicated and longstanding service to this progressive nation.



You desire quality, we deliver perfection! We Build TRUST ... Not just Joinery!

Shakeel Carpentry Works (SCW) holds an asset of expertise brought in by its managing director (Shakeel Ahmad), who has more than thirty five (35) years of Professional Versatile Experience in Project Management, contributing to interiors & exteriors of many prominent cities of the world, including those in the UAE. Thus, SCW is endowed with excellent knowledge and experience assets that could be an envy of many other companies in the construction industry.

The entire team of SCW and KTS are chosen to ensure that quality remains the backbone of our product, delivery and service.

JOINERY AND FIT-OUT **WOODEN DOORS**
PERGOLA **WOODEN GAZEBO** **PARQUET FLOORING**
ELEVATION CLADDING **VANITY (WASH) COUNTERS**
KITCHEN CABINETS **Wardrobes & Closets**
Display Boards **OFFICE DESKS & CABINETS**
WOODEN CEILINGS & WALL PANELS



Finest Joinery for Homes, Villas, Offices, Building, Hotels & Interiors
Doors, Kitchen Cabinets, Wardrobes, Pergola, Office Cabinets

SHAKEEL CARPENTRY WORKS LLC

Ph: 052 680 2343 | Al Jurf1 Ind. Area Ajman
Email: info@joinery.ae | Web: www.joinery.com



PRODUCTS & SERVICES

- **Any Wood Work for Residential or Commercial Spaces:** Yes, that's what we stand for; anything that can be made of wood, ideally. There are endless possibilities which we explore, so we may surprise you by offering things that you would not consider possible to be made of wood.
 - **For Homes, Offices, Retail, Hotels, Villas, Buildings**
 - **Leisure, Shops, Restaurants, Hospitals, Libraries**
- **Doors:** Ranging from basic designs to customised designs, made of solid, semi-solid, panelled doors or flush doors. Veneered doors, painted or polished doors, simple or decorative doors, with or without glass, hinged or swing doors, sliding or folding doors.
- **Kitchen Cabinets:** Contact us for Recipe of a Dream Kitchen. A variety of possibilities make the kitchen a lovable place. We make cabinets of melamine MDF boards in shades that could easily beat the natural Cherry, Maple, Oak, Alder, Hickory, Birch, Walnut or Pecan. Cabinets themselves have wide range of possibilities from open shelves to closets and drawers that conceal your stuff nicely.
- **Wardrobes/ Closets:** They shouldn't just be for storage, the ease and convenience of finding the necessary piece of clothing are especially relevant in the morning rush. You would love to possess our free-standing Wardrobes to fitted sliding Door Wardrobes or the luxurious walk-in Wardrobes.
- **Vanity / Wash Counters:** Our vanity counters most certainly would add value to the aesthetics of your home. With the utility of the cabinets (as we see in the kitchen cabinets) and the elegance of the counter top (granite or synthetic, or wood), these wash counters enhance the ambience of the wash areas immensely.
- **Office Furniture, Cabinets and Workstations**
- **Parquet Flooring and Interior Wooden Cladding**
- **Pergola and elevation cladding made of exterior quality treated natural wood**
- **Wooden desks, Display Boards & benches**
- **Wooden Gazebo:** Add magic to your villa landscape



**PRODUCTS
SERVICES**

For Anything made of Wood

Finest Joinery for Homes, Villas, Offices, Building, Hotels & Interiors
Doors, Kitchen Cabinets, Wardrobes, Pergola, Office Cabinets

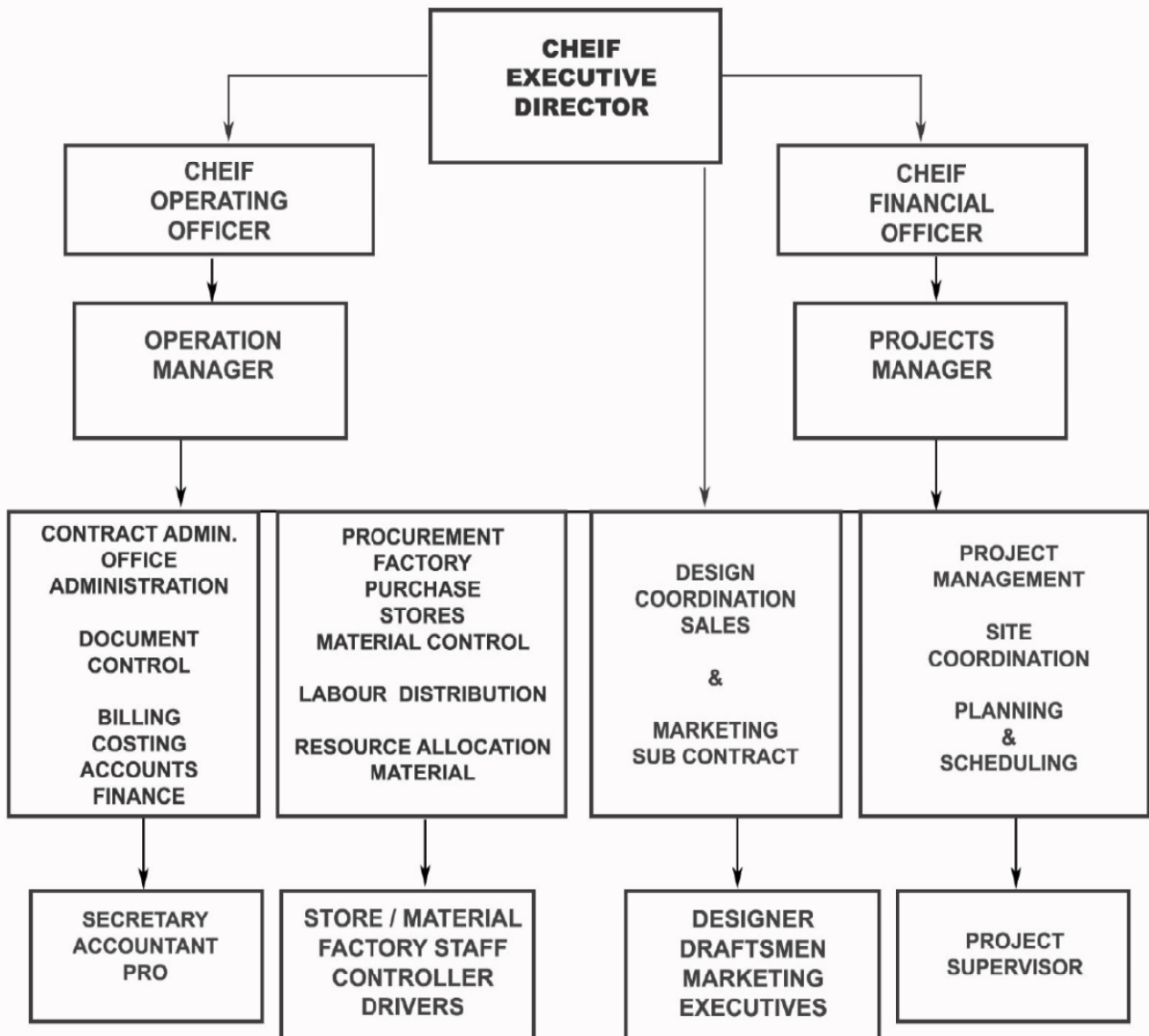
SHAKEEL CARPENTRY WORKS LLC

Ph: 052 680 2343 | Al Jurf1 Ind. Area Ajman

Email: info@joinery.ae | Web: www.joinery.com



Organization Chart



**ORG.
CHART**

For Anything made of Wood

Finest Joinery for Homes, Villas, Offices, Building, Hotels & Interiors
Doors, Kitchen Cabinets, Wardrobes, Pergola, Office Cabinets

SHAKEEL CARPENTRY WORKS LLC

Ph: 052 680 2343 | Al Jurf1 Ind. Area Ajman

Email: info@joinery.ae | Web: www.joinery.com



LIST OF STAFF & WORKERS

Sl. No.	Category	Number
1	OFFICE STAFF:	
	Procurement, Logistics and Transport Manager	1
	Sales Executive	2
	Estimation-cum-Contracts-Engineer	1
	Office Secretary	1
	Accounts-cum-Contracts Manager	1
	Accountant	2
2	INSTALLATION & MAINTENANCE STAFF:	
	Installation Engineer	1
	Installation Supervisors	3
	Drivers	3
3	WORKERS	
	Finishing Carpenters – Plant	4
	Finishing Carpenters – Installation	4
	Joiners	4
	Spray Painters & Polishers	3
	Charge Hand	4
	Machine Operators	2
	Helpers	8
	Mechanic & Electrician	1



STAFF & WORKERS

For Anything made of Wood

Finest Joinery for Homes, Villas, Offices, Building, Hotels & Interiors
Doors, Kitchen Cabinets, Wardrobes, Pergola, Office Cabinets

SHAKEEL CARPENTRY WORKS LLC

Ph: 052 680 2343 | Al Jurf1 Ind. Area Ajman

Email: info@joinery.ae | Web: www.joinery.com

ONGOING PROJECTS

Sl.	Project	Consultant/ Client	Scope of Work
1	Renovations Works in Golden Sands Hotel Apartments in Dubai (regular joinery subcontract for all the projects)	Arencos Real Estate, Dubai	Fire-rated Doors, Non- Fire-rated Doors Kitchen Cabinets Wardrobes
2	Renovations Works in Silver Sands Hotel Apartments in Dubai (regular joinery subcontract for all the projects)	Arencos Real Estate, Dubai	Fire-rated Doors, Non- Fire-rated Doors Wooden Kitchen Cabinets Wooden Wardrobes
3	Renovations Works in Zeenah Furnished Apartments in Dubai	Zeenah Al Hayat Real Estate, Dubai	Kitchen Cabinets Wooden Wardrobes
4	B+G+1+R Villa in Dubai Hills (HADAEQ Sheikh Mohammad), Dubai	Developer: Emaar National Engineering Bureau Consultant	Wooden Doors Kitchen Cabinets Wooden Wardrobes Elevation Cladding Wooden Staircase Treads & Risers
5	B+G+1+R Villa & Swimming Pool, in Al Safa 2 nd , Dubai	Federal Engineering Consultant SKR Building Contracting	Wooden Doors & Kitchen Cabinets, Wash Counters Wooden Wardrobes, TV Cabinet, Book Shelves, Coffee Bar, Study Table and Cabinet
6	G+1 Villa in Al Qouz 2 nd on Plot 355-0724, Dubai	SAS Engineering Consultant	Wooden Doors Wooden Kitchen Cabinets Wooden Wardrobes
6	B+G+1+R Villa & Service Block & Swimming Pool, in Jumeira 1 st (Pearl Jumeirah, Plot 332-4497), Dubai	Developer: Meras R.Qitects Engineering Consultant	Wooden Doors Wooden Kitchen Cabinets Wooden Wardrobes
7	G+1 Villa in Al Khwaneej 2 nd , Dubai, on Plot 282-5592	SAS Engineering Consultant	Wooden Doors Wooden Kitchen Cabinets Wooden Wardrobes
8	Renovation of G+1 Villa (no. 97) in Umm Suqeim First	Hussam Abdelazim Building Contracting LLC	Replace Wooden Doors Wooden Kitchen Cabinets Wooden Wardrobes
9	G+5 Building in Muweila, Sharjah	M/s Hilal Al Emarate Building Contracting LLC	Wooden Fire Rated Doors Non-Fire Rated Doors
10	G+5 Building in Al Naba'a, Sharjah	M/s Al Ramadi Building Contracting	Wooden Fire Rated Doors Non-Fire Rated Doors



**ONGOING
PROJECTS**

For Anything made of Wood

Finest Joinery for Homes, Villas, Offices, Building, Hotels & Interiors
Doors, Kitchen Cabinets, Wardrobes, Pergola, Office Cabinets

SHAKEEL CARPENTRY WORKS LLC

Ph: 052 680 2343 | Al Jurf1 Ind. Area Ajman

Email: info@joinery.ae | Web: www.joinery.com

PROJECTS COMPLETED IN 2019-20

Sl. No.	Project	Consultant/ Client	Scope of Work
1	Renovations Works in Golden Sands Hotel Apartments in Dubai (regular joinery subcontract for all the projects)	Arenco Real Estate, Dubai	Fire-rated Doors Non- Fire-rated Doors Kitchen Cabinets Wardrobes
2	Renovations Works in Silver Sands Hotel Apartments in Dubai (regular joinery subcontract for all the projects)	Arenco Real Estate, Dubai	Fire-rated Doors Non- Fire-rated Doors Kitchen Cabinets ardrobes
3	G+5 Building in Al Naba'a, Sharjah	M/s Al Ramadi Building Contracting	Wooden Fire Rated Doors Non-Fire Rated Doors
4	Renovations Works in Zeenah Furnished Apartments in Dubai (regular joinery subcontract for all the projects)	Zeenah Al Hayat Real Estate, Dubai	Kitchen Cabinets Wardrobes
5	Villa and Building Projects in Sharjah (regular joinery subcontract for all the projects)	M/s Hilal Al Emarate Building Contracting LLC	Fire-rated Doors Non- Fire-rated Doors Kitchen Cabinets Wardrobes
6	G+1 Villa on Plot in Al Barsha 2 nd , Dubai	M/s Al Nujaba Building Contg Islamic Architects Eng Consultant	Wooden Doors Staircase Treads & Risers
7	Interiors Work of Yale (UK) Showroom in Karama, Dubai	M/s Tinka Contracting/ M/s ASSA ABLOY Security Solutions (UK)	Display Doors Parquet Flooring Display Cabins Office Cabinets & Desks Display Boards & Benches
8	Interiors Work of Union (UK) Showroom in Karama, Dubai	M/s Ahmed Saad Almoajil Trading Est	Display Doors Parquet Flooring Office Cabinets & Desks Display Boards & Benches
9	G+M+1+R Building in Naif, on plot 118-0309, Dubai	Chawla Engineering Consultant	Fire-rated Doors Non- Fire-rated Doors Kitchen Cabinets Wardrobes
10	G+M+1+R Building in Naif, on plot 118-0227, Dubai	Chawla Engineering Consultant	Fire-rated Doors Non- Fire-rated Doors Kitchen Cabinets & Wardrobes

11	G+1 Building in Souq Al Kabeer (Heritage Area) on Plot 3120760, Dubai	M/s Tinka Contracting Dubai Municipality Heritage Department	Heritage Department specified Doors Roof Structural Beams Decorative Interior & Cladding Mashrabiya
12	G+1 Villa in Al Khwaneej 1 st , Dubai	M/s Abdullah Mohammed Ali Yousef	Wooden Doors Kitchen Cabinets Wardrobes
13	G+1 Villa, Service Block & Majlis Block in Al Mizhar 1 st , Dubai	Qasba Engineering Consultancy	Wooden Doors Kitchen Cabinets Wardrobes & Gazebo
14	G+1 Villa & Service Block in Al Warqa 3 rd , Dubai, on Plot 423-1878	Red Crystal Engineering Consultants	Wooden Doors Kitchen Cabinets Wardrobes
15	G+4 Building on Plot GOV. 731 / MULK 867 in Al Nabah, Sharjah	Client: Mr. Saud Mohamed Jasim Almidfa Alharthi	Fire-rated Doors, Non- Fire-rated Doors
16	G+4 Building in Industrial Area # 15, Sharjah	M/s Kayan Real Estate	Replace old doors with new FD90 & FD60 Fire-rated Doors Non- Fire-rated Doors
17	G+1 Villa on Plot 648-8384, in The Villa Area (Dubailand), Dubai	Pioneer Engineering Consultant	Wooden Doors Kitchen Cabinets Wardrobes
18	G+1 Villa on Plot 648-8469, in The Villa Area (Dubailand), Dubai	Pioneer Engineering Consultant	Wooden Doors Kitchen Cabinets Wardrobes
19	G+1 Villa on Plot 671-4265, in Al Barsha South 1st, Dubai	M/s Al Nujaba Building Contg	Wooden Doors Kitchen Cabinets Wardrobes
20	G+1 Villa in Al Qarain4, Sharjah	Client: Hilal Al Emarate Building Contracting	Wooden Doors for Bed rooms and Bathrooms
21	G+1 Villa on Plot 671-4265, in Al Barsha South 1st, Dubai	Islamic Architects Consulting Engineers	Wooden Doors for Bed rooms and bathrooms
22	G+1 Villa on Plot in Al Qouz 2 nd , Dubai	Client: Mr. Mohammad Hassan Nasir	Wooden Doors Kitchen Cabinets Wodden Wardrobes
23	G+1 Villas (6 nos.) in Al Hamriyah, Sharjah	Client: Hilal Al Emarate Building Contracting	Wooden Doors Wodden Wardrobes Kitchen Cabinets



**COMPLETED
PROJECTS**

For Anything made of Wood

Finest Joinery for Homes, Villas, Offices, Building, Hotels & Interiors
Doors, Kitchen Cabinets, Wardrobes, Pergola, Office Cabinets

SHAKEEL CARPENTRY WORKS LLC

Ph: 052 680 2343 | Al Jurf1 Ind. Area Ajman

Email: info@joinery.ae | Web: www.joinery.com



VISION OF SHAKEEL CARPENTRY WORKS LLC

STRIVE TO CONSISTENTLY RAISE KTS GROUP'S (AND SCW'S) STAKE IN THE ENRICHMENT OF UAE'S HERITAGE, AND ITS STAKE IN THE WORLD ECONOMY, FOCUSING ON MAXIMIZING SATISFACTION LEVELS OF CUSTOMERS, EMPLOYEES AND ALL STAKEHOLDERS.

MISSION OF SHAKEEL CARPENTRY WORKS LLC

THE PATH TO REALIZING SCW'S VISION IS BASED ON FUNDAMENTAL VLAUES OF TRUST, RESPECT, AND SHARED BENEFITS.

OUR MISSION:

- TO UNDERTAKE THE BUSINESS WITH PRIME FOCUS ON COST LEADERSHIP WITH EXCELLENCE
- TO MEET STAKEHOLDERS' EXPECTATIONS OF SCOPE, QUALITY, TIMELY DELIVERY, SAFETY AND ENVIRONMENTAL CONCERNS.
- TO DEVELOP EFFECTIVE MANAGEMENT PROCESSES THAT HELP RAISE PRODUCTIVITY, UNINTERRUPTED ENHANCEMENT IN THE REACH OF THE ORGANIZATION,
- TO INSTILL IN ALL PERSONNEL PROFESSIONAL WORK ETHICS, RESPECT FOR ALL STAKEHOLDERS, WORK STANDARDS AND REGULATIONS,
- TO BUILD VALUE FOR THE ORGANIZATION AND ITS STAKEHOLDERS IN ORDER TO BECOME THE MOST PREFERRED CHOICE OF EVERY CUSTOMER.



VISION & **MISSION**

For Anything made of Wood

Finest Joinery for Homes, Villas, Offices, Building, Hotels & Interiors
Doors, Kitchen Cabinets, Wardrobes, Pergola, Office Cabinets

SHAKEEL CARPENTRY WORKS LLC

Ph: 052 680 2343 | Al Jurf1 Ind. Area Ajman
Email: info@joinery.ae | Web: www.joinery.com



SHAKEEL

carpentry

creating a perfect finish

Quality Assurance Policy: Build Right, Build Fast

Shakeel Carpentry Works LLC is committed to supplying services of consistent quality that conform fully with statutory requirements and meet our client's documented and implied expectations in terms of technical, budget, quality, and time. Making the best possible application of knowledge, processes, skills, tools, and techniques, we strive to make a significant impact on project success - a success which is shared with all the project stakeholders. We focus on (a) Conformance to requirements: The project's processes and products meet written specifications, and (b) Fitness for use: The deliverables can be used as they were intended, serving the user's needs in the best possible way.

The principal quality aims of Shakeel Carpentry Works are:

- To have a real understanding of client's needs that align with their business requirements.
- To strengthen relationships and encourage repeat business with existing clients.
- To win projects not solely on price but through innovation and added value.
- To continually strive to improve our performance through analysis and continuous improvement of business processes.
- To develop staff potential through appropriate training in project management quality systems, e.g. PMBOK, ISO 9001, ISO 10006:2003, ISO 10007:2003, and ISO 31000:2009.
- To engender a positive commitment to quality and create an environment of teamwork and cooperation that enables staff to work effectively.
- To support staff in their day-to-day work by developing an accredited management system that links all business activities within the organisation and is documented to meet the requirements of BS EN ISO 9001:2008.



QA/QC POLICY

For Anything made of Wood

Finest Joinery for Homes, Villas, Offices, Building, Hotels & Interiors
Doors, Kitchen Cabinets, Wardrobes, Pergola, Office Cabinets

SHAKEEL CARPENTRY WORKS LLC

Ph: 052 680 2343 | Al Jurf1 Ind. Area Ajman
Email: info@joinery.ae | Web: www.joinery.com



SHAKEEL
carpentry
creating a perfect finish

Management will communicate this policy to all employees and staff in such a way that it is properly understood and followed.

Our quality policy has been formulated to serve as a reference base for the policy and procedures for Quality Assurance and controls within the Company. The Quality Assurance system is designed to ensure the execution & maintenance of product quality & standards through the provision of evaluation and verification of processes at all stages of construction supply and installation works are thoroughly maintained. Compliance with the provisions and objectives of this policy is mandatory on all company personnel.

WE ARE COMMITTED TO EXECUTE WORKS CONTRACTS IN A MANNER WHICH WILL MEET OR EXCEED CUSTOMER REQUIREMENTS. OUR POLICY IS BASED ON THE FOUNDING PRINCIPLE THAT THERE IS NO SUBSTITUTE FOR QUALITY AND WE MUST AT ALL TIMES GO THE EXTRA LENGTH TO ENSURE QUALITY IN EVERYTHING WE DO. THESE ARE REFLECTED IN OUR ENDEAVOUR IN PROVIDING OUR CLIENTS ADEQUATE RESOURCES, USE OF EFFICIENT AND ECONOMICAL METHODS COMPLYING WITH RELEVANT CODES, SPECIFICATIONS AND STANDARDS AND STRIVE FOR CONTINUOUS IMPROVEMENT OF THE EFFECTIVENESS OF THE QUALITY MANAGEMENT SYSTEM.



QA/QC POLICY

For Anything made of Wood

Finest Joinery for Homes, Villas, Offices, Building, Hotels & Interiors
Doors, Kitchen Cabinets, Wardrobes, Pergola, Office Cabinets

SHAKEEL CARPENTRY WORKS LLC

Ph: 052 680 2343 | Al Jurf1 Ind. Area Ajman
Email: info@joinery.ae | Web: www.joinery.com



SHAKEEL
carpentry
creating a perfect finish

Health, Safety and Environment (HSE) Policy

Shakeel Carpentry Works LLC and Khushboo Technical Services LLC are committed to the safety of employees, contractors and the general public. We recognize that providing and integrating a sound environmental, health and safety program into our business is key to our success.

It is SCW's and KTS's policy to:

- Comply with all pertinent environmental and safety laws, rules and regulations, not just because it is legally required, but also because we believe it is the responsible way to conduct our business;
- Set HSE targets and goals annually to measure our performance, to achieve superior results and to continually improve;
- Monitor, revise and reemploy safety systems and environmental assessments on a regular basis;
- Provide education and training to our employees in order for them to have the knowledge, skills, and understanding to perform their responsibilities and duties at the highest level;
- Routinely review and verify performance with audits, evaluations and other quality assurance and quality control methods;
- Empower and expect employees and contractors to promptly report noncompliance or unsafe conditions and to take immediate action to prevent injuries or environmental accidents;
- Provide relevant safety and health information to contractors and require them to provide proper training for the safe, environmentally sound performance of their work; and
- Communicate our commitment to this policy to our subsidiaries, affiliates and contractors and seek their support.
- As a condition of employment, all employees are required to comply with all safety- and environmental-related rules and regulations. Each employee understands that they are individually responsible for their own safety and the safety of those around them.
- Apply our technical skills to all HSE aspects in the design and engineering of our services and products;
- Communicate openly with stakeholders and ensure an understanding of our QHSE policies, standards, programs and performance. Reward outstanding QHSE performance;
- Improve our performance on issues relevant to our stakeholders that are of global concern and on which we can have an impact, and share with them our knowledge of successful QHSE programs and initiatives.

This Policy shall be regularly reviewed to ensure ongoing suitability. The commitments listed are in addition to our basic obligation to comply with Schlumberger standards, as well as all applicable laws and regulations where we operate. This is critical to our business success because it allows us to systematically minimize all losses and adds value for all our stakeholders.



**HSE**
POLICY
For Anything made of Wood

Finest Joinery for Homes, Villas, Offices, Building, Hotels & Interiors
Doors, Kitchen Cabinets, Wardrobes, Pergola, Office Cabinets
SHAKEEL CARPENTRY WORKS LLC
Ph: 052 680 2343 | Al Jurf1 Ind. Area Ajman
Email: info@joinery.ae | Web: www.joinery.com



رخصة مهنية / Professional License



رخصة عادية - Regular License

رقم الرخصة License No. **91397**

رقم الغرفة ACCI No. 99948

رقم السجل التجاري Register No. 86841

تفاصيل الرخصة	تجديد رخصة / Renew License	License Details
الاسم التجاري شكيل للنجارة ذ.م.م	Trade Name SHAKEEL CARPENTRY WORKS L.L.C	
الشكل القانوني شركة ذات مسؤولية محدودة	Legal Form Limited Liability Company	
تاريخ الاصدار 2017-04-12	Issue Date 2017-04-12	
تاريخ الانتهاء 2021-04-10	Expire Date 2021-04-10	

اسم المدير / Manager Name	الجنسية / Nationality	رقم الجواز / Passport
شكيل أحمد محمد شريف أحمد SHAKEEL AHAMAD MOHAMMAD SHAZEEF AHMAD	الهند India	

الانشطة	Activites
منجرة (ورش النجارة)	Carpenter shop

العنوان / Address	اسم المؤجر / Lessor	تاريخ انتهاء عقد الاجار / Contract Expiry Date	صندوق البريد / P.O. Box
محل رقم 02، الحرف الصناعية 1 Shop No. 02, Jurf Industrial Zone1	younus hassan abdulrahim almulla	2021-01-19	

ملاحظات

رقم الايصال / Voucher No.	تاريخ الايصال / Voucher Date.	رقم الموظف / Emp No.
30143565	2020-06-30	1139

تاريخ الطباعة / Print Date 2020-06-30

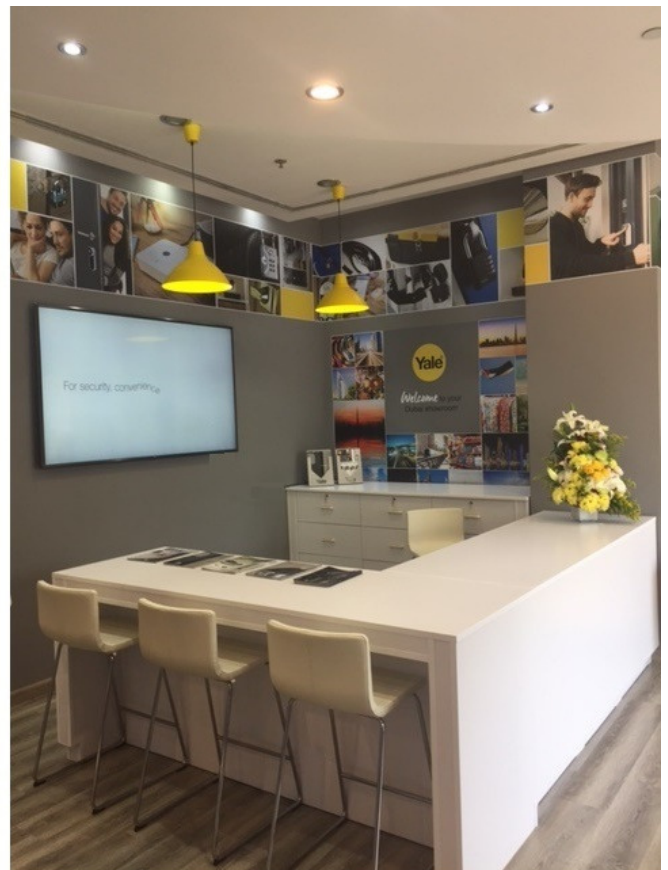


PARQUET FLOORING



INTERIORS

Parquet Flooring, Wooden Desks, Display Boards & Benches



**Complete Interiors - MEP, Gypsum, Parquet, Painting, Display Counters/ Tables/ Kiosks
Yale-Union Showroom in Karama, Dubai**



In-Progress Picture of **Decorative wooden slat partition, Parquet flooring and Wall Cladding Works** for Al Aber Contracting Chairman's Office in Business Bay, Dubai



Workstations for Al Aber Contracting's New Office in Business Bay, Dubai



Wooden Cabinets, Wall Caldding, Wooden doors, Glass Partitions for New Office in Busines Bay, Dubai





**Complete Interiors - MEP, Gypsum, Parquet, Painting, Display Counters/ Tables/ Kiosks
Yale-Union Showroom in Karama, Dubai**



Vanity and Wardrobes in a private villa of Al Mizhar 1, Dubai



Parquet Flooring and Wooden Stage & Mirror with Shelf, for Fitness Centre in Dubai





Wooden Wall Cladding with Door & Cladding with Artificial Grass in a Fitness Centre of Dubai



Wooden Beds for Kids (with parquet flooring) in private villa of Al Qouz, Dubai

PERGOLA & GAZEBO

ADD BEAUTY TO YOUR LANDSCAPE



Wooden Pergola



Wooden Gazebo for a Villa in Al Mizhar, Dubai



Wooden Pergola for a Villa in JVC, Dubai



Wooden Pergola in JVC Villa



Mirror-Finish Wooden TV Stand (right: in factory, and left: after delivery in customer house)

An entire House in Wood, or Just an Office; Remember Us



Our Specialization

- Any Wood Work for Residential Commercial Spaces,
- Doors, Kitchen Cabinets, Wardrobes, Vanity Counters
- For Homes, Offices, Retail, Hotels, Villas, Buildings
- Leisure, Shops, Restaurants, Hospitals, Libraries



INSPIRING VANITY COUNTERS













GORGEOUS TIMBER DOORS (SOLID, SEMI-SOLID & FLUSH)

DOORS IN AL MIZHAR VILLA (PLOT 262-1532)

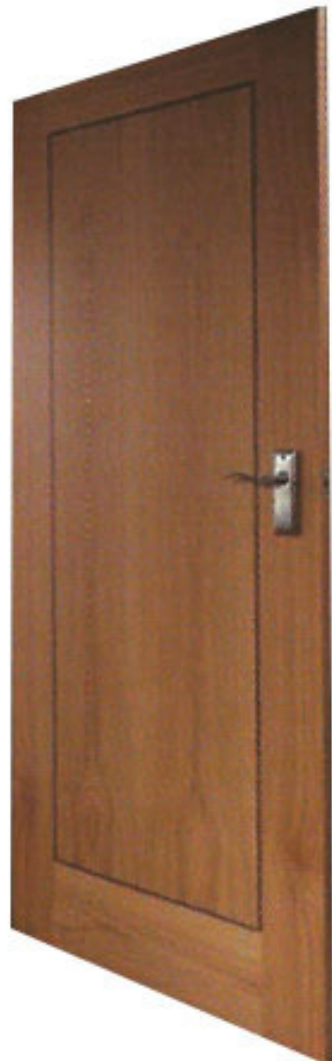
















WOODEN DOORS



WOODEN DOORS



WOODEN DOORS



WOODEN DOORS



TRULY EXCITING KITCHEN SPACES







G+1 Villa in Al Barsha South 2nd, Plot # 672-0605
Contractor: Tinka Contracting LLC







COMPACT BUT LIVELY OFFICE SPACES





PRIVATE WORK SPACES



Elegant Wardrobes















SHAKEEL carpentry

creating a perfect finish



Dubai Office:
402, Bin Soughat Building,
Salahaddin Street, near Reef Mall

Ajman Office:
Al Jurf industrial area, shed no. 9,
Ajman.



+971 52 680 2343
+971 50 459 9172



+971 4 251 6633



info@Joinery.ae



www.Joinery.ae



GET IN TOUCH